



Fresh Food

Kids

Discovery Tour

Years 5 & 6
hands on
head recycling





Notes

As well as displaying the recycling poster on the wall, we want children to really stop and think about what needs to be recycled.

The game of hands on heads adds a competitive element, and gets students to pay attention and really have a think about what they should be doing with rubbish. And who doesn't love a game.

Instructions:


Ask all students to stand up

Tell them you'll make a statement, and if they agree with the statement they put their hands on their heads, if they disagree, they put their hands on their hips.

After each question, those who answered correctly remain standing, and the other group sits down.

This continues until one winner is left standing.

We've included a list of statements, but more can be added by checking your local council website to see exactly what can be recycled. For example, some areas can recycle coffee cups, others can't.





Statements

Glass jars go into recycling (✓)

Newspapers should be put in landfill
(X – should be recycled)

Soft-drink bottles go in the recycling bin (✓)

Lightbulbs go in the recycling bin
(X – landfill or specialist drop off)

Plastic milk bottles go into the recycling (✓)

Shredded paper towels can go into
the compost (✓)

Plastic shopping bags go into the recycling
(X – REDcycle soft plastics collection
at Woolworths)

Tin cans go into landfill
(X – Should be recycled)

Bread bags go into landfill
(X – REDcycle soft plastics collection)

Aerosol sprays go in the recycling bin (✓)

Yoghurt tubs go into soft plastic collection
(X – Recycling bin)



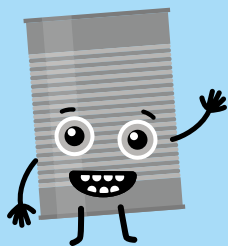


Fresh Food
Kids

Discovery Tour

GO GREEN

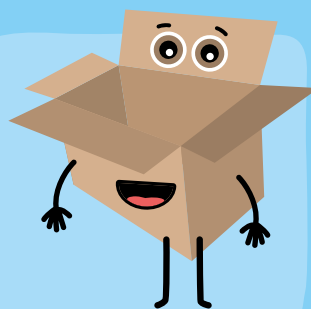
Always recycle these:



Tin cans



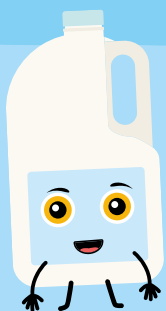
Plastic bottles



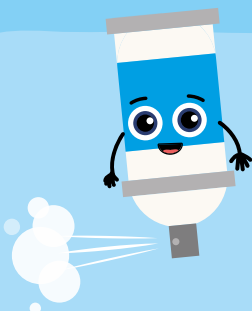
Paper and
cardboard



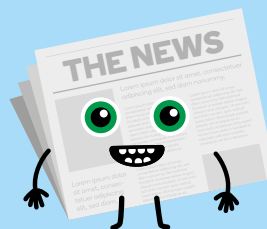
Glass jars



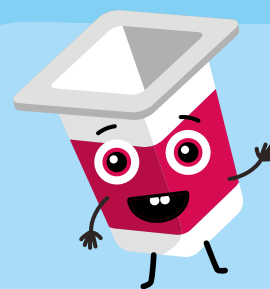
Milk bottles



Aerosol cans



Newspapers



Food containers
and tubs

Collect soft plastics, like bread bags, food packets and shopping bags, and put these in the REDcycle bin at Woolworths